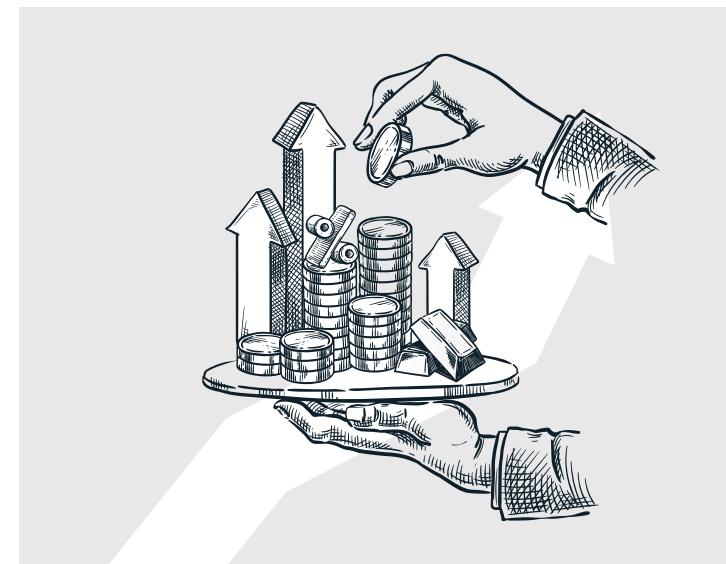


Managing Compliances for a Prominent NBFC Client



A non-banking financial company (NBFC) offering a range of financial products and services across the country through its network of branches in remote rural areas. The company employs a customer-centric, technology-enabled business strategy to provide these offerings through a distinctive "Wealth Management" approach. By gathering comprehensive information on a household's assets, liabilities, income, expenses, and financial goals, a financial well-being report is generated.



Client Overview

Industry

BFSI

Head Quarters

Chennai

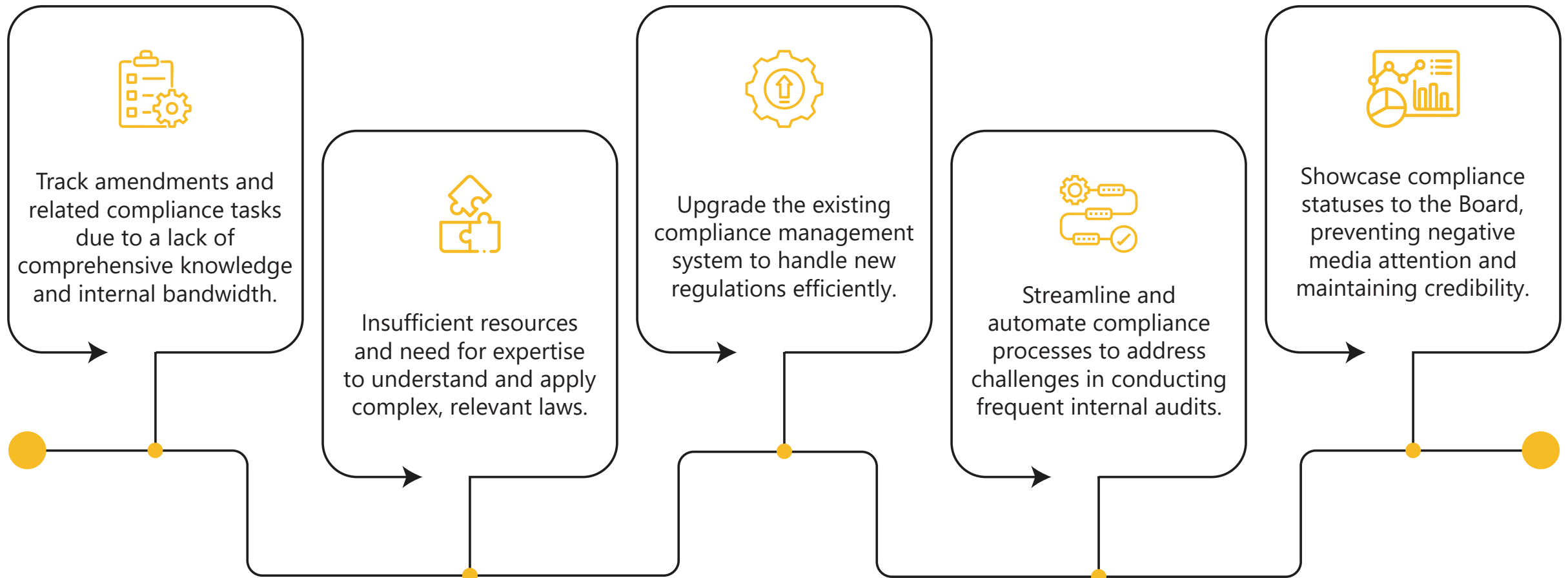
Branches

399 across
10 States

Employees

2800+

Compliance Needs & Challenges faced by the Client



Phases of Implementation Process

01



02



03



04



Kickoff Meeting

Begin with a comprehensive project plan presentation, outlining key milestones and dates to set clear expectations and timelines. This initial meeting serves as an opportunity to align all stakeholders and establish a communication framework for the project's duration.

Configuration

Upon receipt of the required data, Aparajitha's team of legal experts meticulously reviews and configures the system to align with the specific compliance needs of XYZ Financial Services. This step ensures that the platform is tailored to accurately reflect the company's regulatory obligations and workflows.

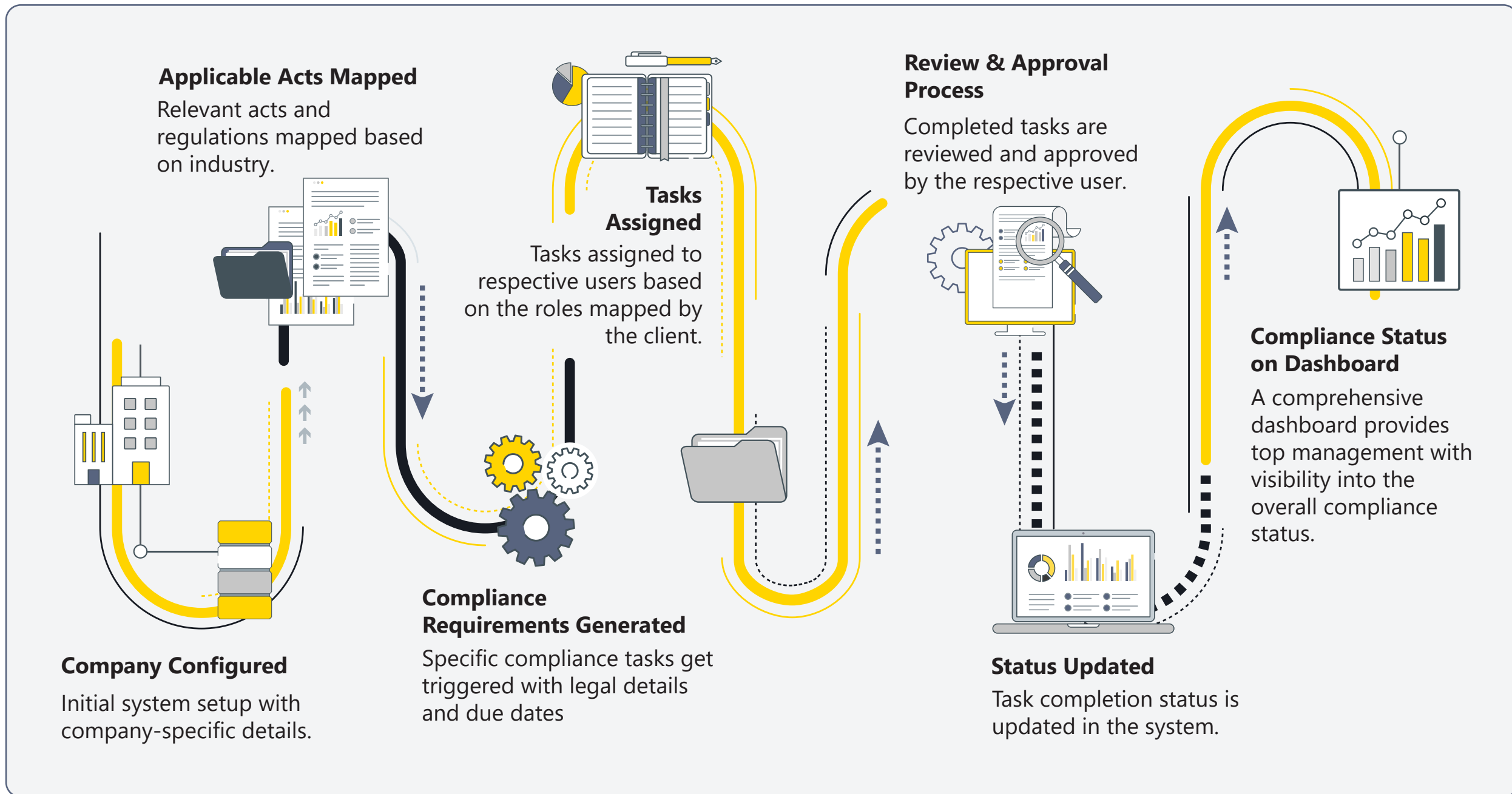
Training

Conduct thorough training sessions for relevant stakeholders, ensuring they understand how to use the system effectively. These sessions are designed to equip businesses with the necessary skills to navigate the platform and utilize its features to maintain compliance seamlessly.

Monitoring & Support

Closely monitor the implementation process, providing hands-on support to ensure the system stabilizes and operates smoothly. During this phase, create controls within Simpliance's platform to track and monitor progress, ensuring all compliance tasks are completed accurately and on time. This monitoring is crucial for identifying and addressing any issues promptly.

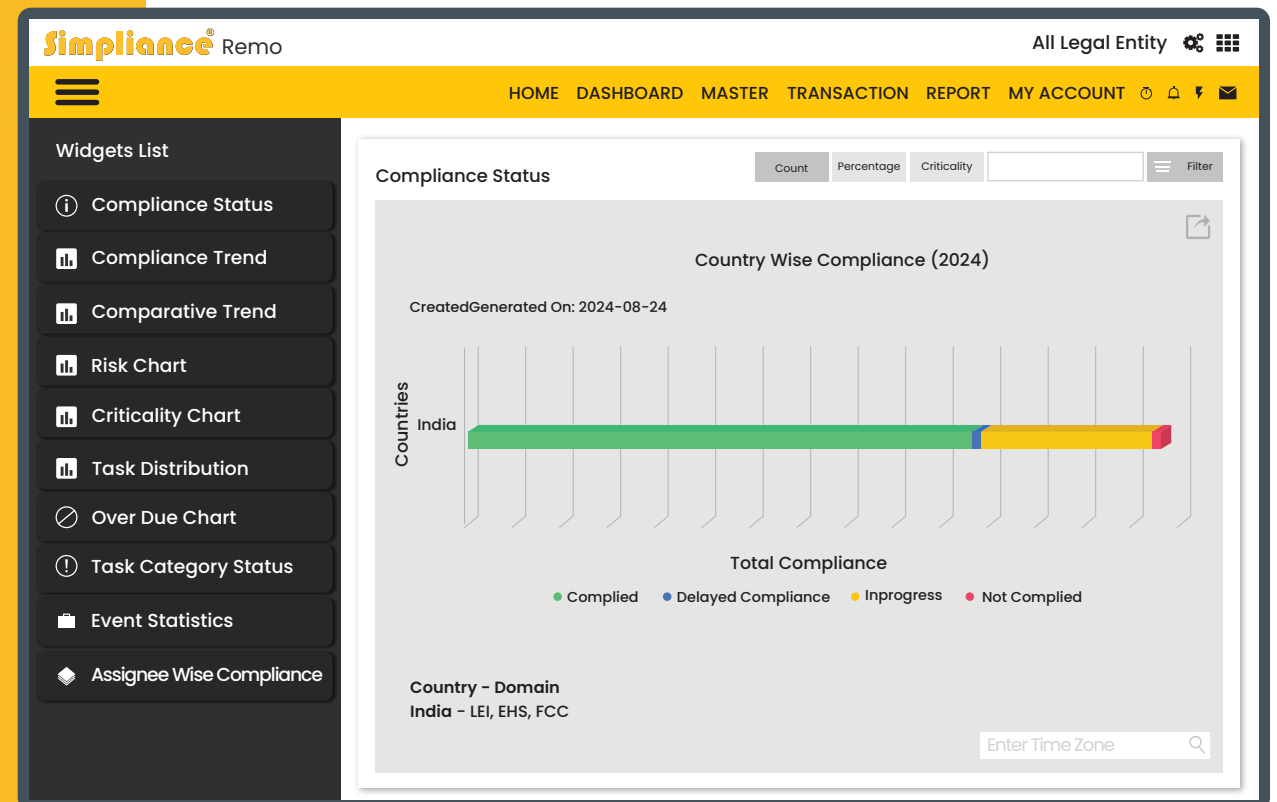
How It Works: Product Process Flow



Compliance Management

Compliance was ensured under Labour, Employment, and Industrial Laws for all 399 branches and Fiscal, Corporate and Commercial wherever applicable. A Few Key Applicable Tasks from Total Industry-Specific Applicable Tasks.

- >>> The Central Goods and Services Tax Act, 2017
- >>> The Collection of Statistics Act, 2008
- >>> The Companies Act, 2013
- >>> The Credit Information Companies (Regulation) Act, 2005
- >>> The Foreign Exchange Management Act, 1999
- >>> The Income Tax Act, 1961
- >>> The Information Technology Act, 2000
- >>> The Insurance Act, 1938
- >>> The Micro, Small and Medium Enterprises Development Act, 2006
- >>> The Prevention of Corruption Act, 1988
- >>> The Prevention of Money-Laundering Act, 2002
- >>> The Reserve Bank of India Act, 1934



Discover how Simpliance transforms compliance:
https://youtu.be/rZ9YJxamXt4?si=XR_BTIPqCAIdpAGX

Other value-added services

- Compliance Legal Experts**
A dedicated team of specialists offering consultation and insights on industry updates, providing query assistance to ensure thorough understanding and compliance.
- Dedicated Relationship Manager**
A single point of contact for all client concerns, ensuring seamless communication and personalized support throughout the engagement.
- Cost Benefits**
Significant cost savings through reduced manual processes and streamlined operations.
- Automatically Updated Knowledge**
Tasks and due dates are auto-updated with real-time regulatory changes, ensuring the latest compliance information is always available.
- Easy Audits**
The tool acts as a centralized archive for all documents, making records organized and easily accessible, which significantly reduces time and effort during audits.
- Credibility**
By maintaining consistent compliance & transparency, the tool generates 20 types of reports and provides an integrated view across domains through dashboards for senior management, fostering collaboration and reinforcing trust.

A cloud-based Compliance Management System (CMS) enables NBFCs to centralize compliance efforts and automate routine tasks, providing real-time insights into compliance status. This proactive approach mitigates compliance risks and allows organizations to focus on strategic initiatives and sustainable growth.

Impact of Aparajitha's Services



Instant Notifications and Updates

- Users receive real-time alerts for new amendments to the law and related compliance requirements, ensuring they stay informed and up-to-date at all times.



Auto-updating tasks based on regulatory changes

- Stay ahead with auto-updating task lists that adapt to regulatory changes in real-time, ensuring continuous compliance without manual intervention.



Customised Communication

- Customised email reminders and notifications deliver tailored updates on new tasks and compliance actions, ensuring clients stay informed based on their specific requirements.



Expert Guidance and Support

- Our dedicated team of legal experts offers detailed guidance on new tasks, helping clients navigate complex compliance requirements. Prompt query resolution ensures clients have the support they need.



Seamless Integration and Efficiency

- Proactive updates and expert support streamline routine compliance tasks, minimizing disruptions and enhancing overall operational productivity.

India's No.1 Tech-based Compliance Service Provider

25+

Years

Experience



100,000+

Establishments



5.2 Million+

Contract Labourers




8 Million+

PF & ESI Compliances



2,000+

Factories

 rakeshwaran.r@simpliance.in

 +91 99627 59075

 www.simpliance.in | www.aparajitha.com

Simpliance[®]
Powered by Aparajitha